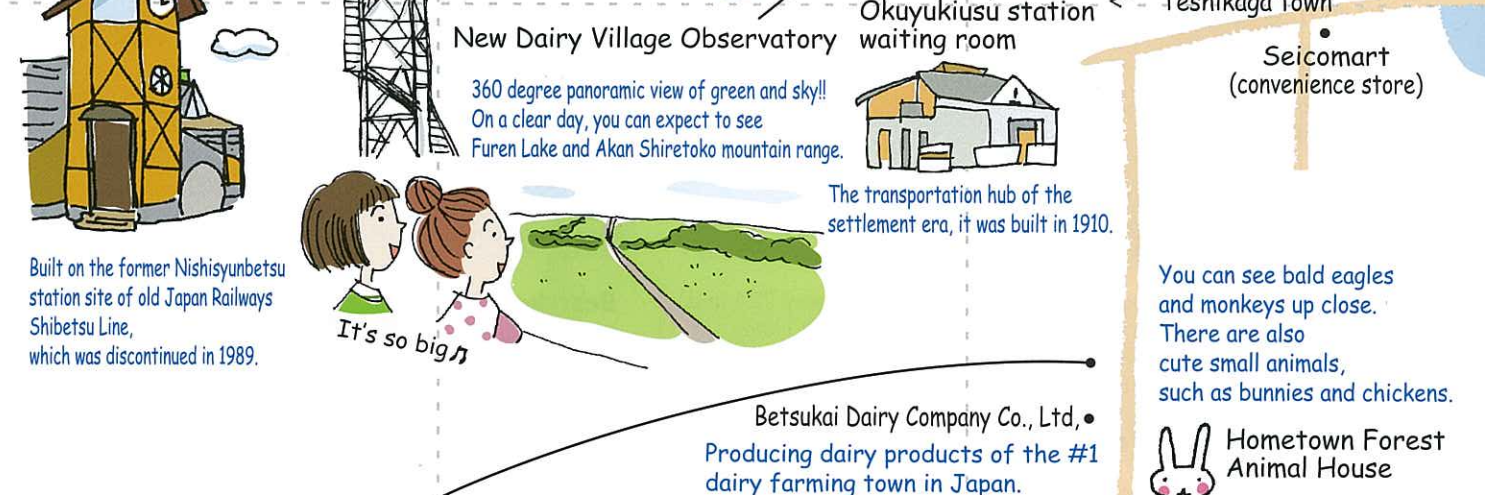


Betsukai complete town map

Flight experience for 7000yen, limited to one person. June to October. Please call for more info. (0153-77-3377)



- Impressive places
- Hot Spring Facilities



Built on the former Nishisunbetsu station site of old Japan Railways Shibetsu Line, which was discontinued in 1989.



New Dairy Village Observatory
360 degree panoramic view of green and sky!! On a clear day, you can expect to see Furen Lake and Akan Shiretoko mountain range.

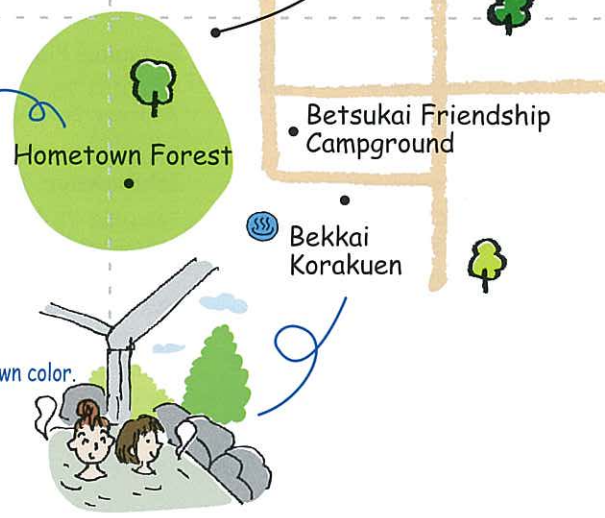
The transportation hub of the settlement era, it was built in 1910.

Betsukai Dairy Company Co., Ltd.
Producing dairy products of the #1 dairy farming town in Japan.

Farming and Fishing Village Processing Experience Facility
You can experience making cheese and butter. (Reservation required)

Pitch your tent at the Friendship Campground, walk around the forest and bathe in nature!

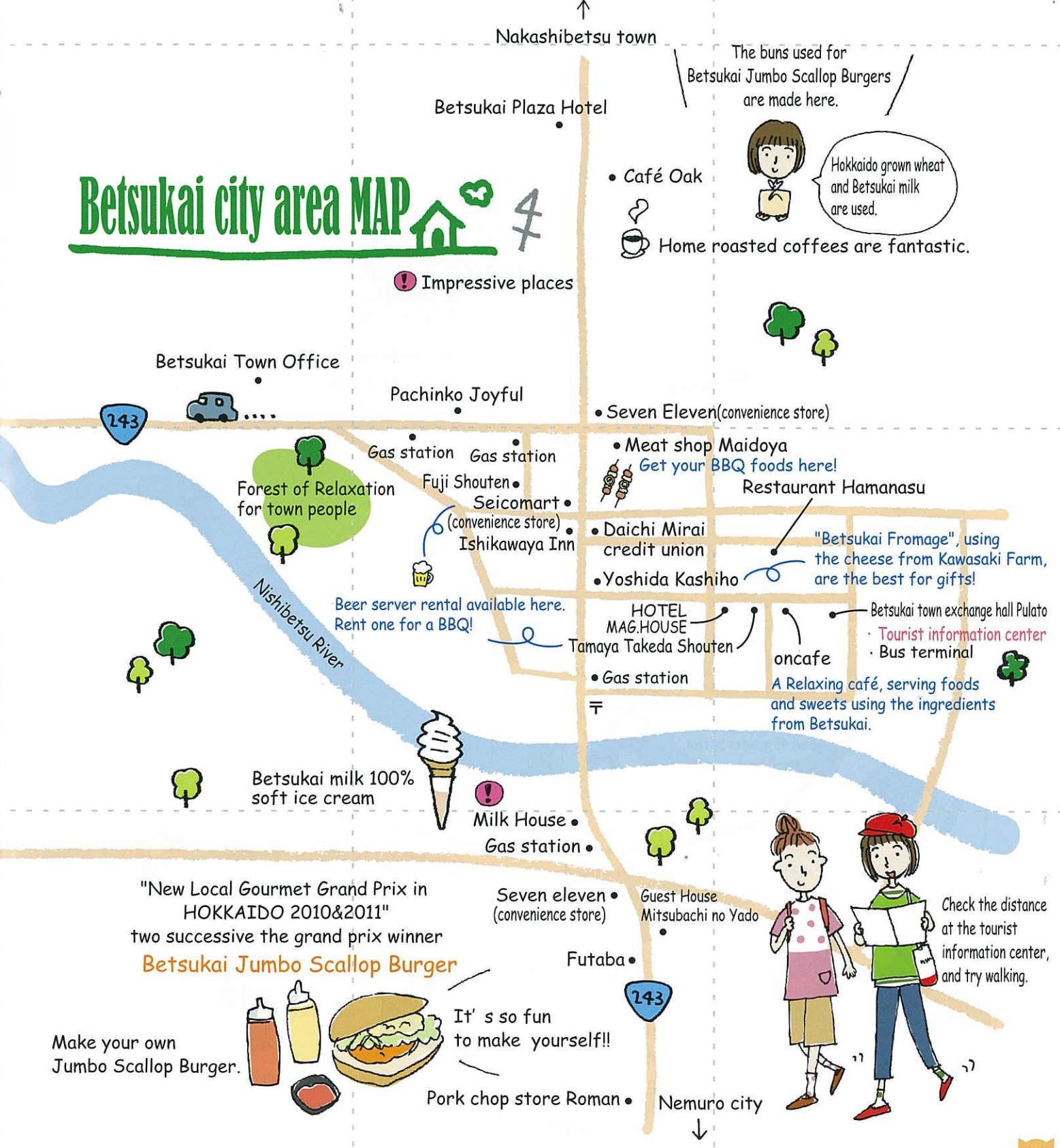
The spring water here is a moor hot spring, which gushes out at Tokachigawa Hot Spring in Hokkaido. The hot water has a distinguishable dark brown color. Day-trip bathing is available. Cosmetic lotions made with spring water are also a popular item sold.



From this page, I There are so many impressive spots in this vast Betsukai waiting for you to explore. The endless roads and green pastures, glittering sea reflecting the sun light, cattle grazing grass peacefully, and herds of Ezo-deer... In the city area, you can walk around and eat a the local gourmet and sweets using ingredients from Betsukai. There are also hot springs known as the spring water for beautiful skin.

BETSUKAI

Betsukai city area MAP



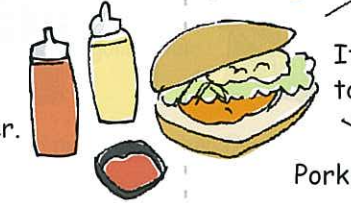
- Impressive places

The buns used for Betsukai Jumbo Scallop Burgers are made here.

Hokkaido grown wheat and Betsukai milk are used.

- Café Oak
- Home roasted coffees are fantastic.

"New Local Gourmet Grand Prix in HOKKAIDO 2010&2011" two successive the grand prix winner
Betsukai Jumbo Scallop Burger



Make your own Jumbo Scallop Burger. It's so fun to make yourself!!



"Betsukai Fromage", using the cheese from Kawasaki Farm, are the best for gifts!

A Relaxing café, serving foods and sweets using the ingredients from Betsukai.